

Audience

This tutorial is made for Users of Ars Media export plug-in for Adobe® Photoshop®¹. This tutorial assumes that you are already familiar with normal usage of Scala®² Script Export plug-in and its options. If you have any troubles using these options please read Instruction file that you have received with plug-in.

This tutorial also assumes that you are familiar with basic automation tasks in Photoshop such as recording an action, using action palette, and navigating among actions in action sets. We will try to give you instructions about those topics, but for general instructions refer to Photoshop manual.

It is also assumed that all documents for batch exporting are placed in folder:

C:\ForBatchExport

Of course you can place your files in a folder of your choice.

Scala Work

Start by creating one empty Scala script that should serve as a place where plug-in will attach the scripts exported from PSD files. Choose resolution for the script that is equal to resolution of PSD files that will be exported. Note that all Photoshop files must have the same size in pixels as the script that you have created. If there is a file with different size it will not be exported, and error.log file will be created (more about errors you will find later).

You can also add exported scripts to script that already exists but you must pay attention that script in question does not have event named as one of PSD file names from file chosen for exporting.

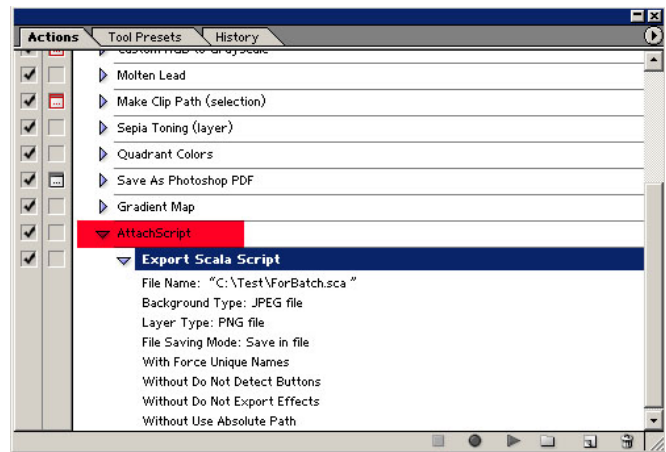
For this example we have created Scala script named ForBatch.sca and it is created in "C:\test" folder.

Recording an Action

The first thing that you have to do is to record an action in Photoshop that represent a way in which you want to export your PSD files. In order to do that follow the procedure:

- Open in Photoshop one document from folder where you have placed documents for batch exporting.
- On action palette click on button **Create new action**. New Action dialog pop up. Type-in a suitable name for your action (*AttachScript* is the one that we have chosen for this example), and choose action set where action should be placed (*Default Actions.atn* in our example). Then click on **Record** button.
- From file menu choose Automate, then Export Scala script.
- Choose picture format for background and clips, clip saving options and advanced options that you would like to be used in batch exporting.
- In file saving options you must choose **Append to existing file**, if action is going to be used in batch mode. That is because other options do not have much sense in batch mode. If you choose overwrite existing file, Photoshop will generate script with just one page and a lot of clip directories with associated clips. If you choose Create new file, Photoshop will create new file first time it exports a picture. Next time plug-in tries to save a script under this name, it will fail, since scala script file it tries to use for output, already exists and append or overwrite options weren't chosen. However you can use other than append modes if you want to use action for "One-Click" export.
- After choosing export options click on **Save** button and let plug-in finish its job.
- After plug-in finishes with exporting, click on **Stop Playing/Recording** button on Photoshop action palette.

If you have followed above mentioned instructions you should be able to see new action, AttachScript in this example, in action palette, and it should look similar as one in picture. Differences could appear due to your choices used for exporting.



Stop playing/recording

Create new action

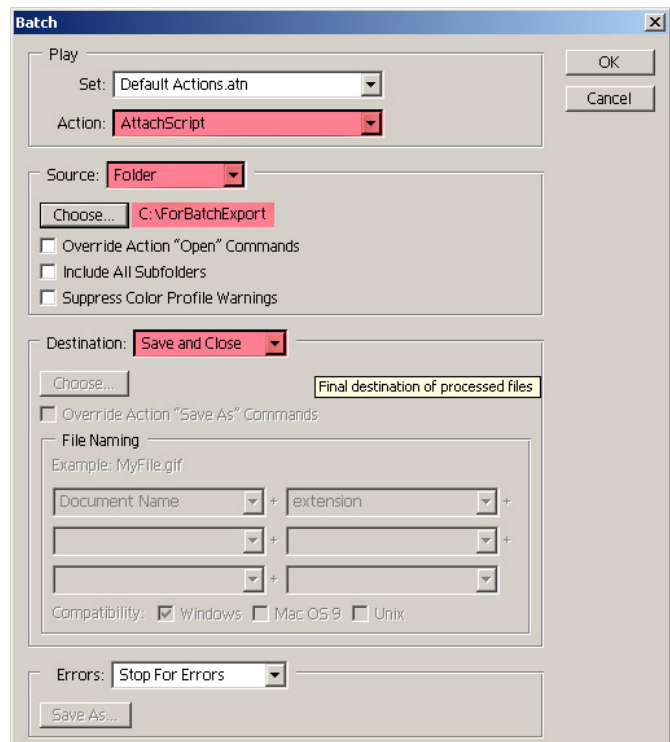
Using Action in Batch Mode

If you have successfully created an action for exporting PSD file, using that action in batch mode is really straightforward:

- Open Photoshop. From File menu choose Automate, then Batch. Batch dialog pop up.
- Choose action set where you have recorded an action.
- Chose the action that you have recorded.
- Click on **"Choose"** button and navigate to source directory (one that containing files that you want to export).
- For destination use "Save and Close".
- Click OK and watch the magic.

File that you have used for recording action will not be exported, and you will see the text file that reports an error for that file. Why? Because final Scala script already contains page generated from that file,

and duplicated events are not allowed in Scala script. However goal is achieved, all files that you have wanted to export will be included in the resulting script.



Errors

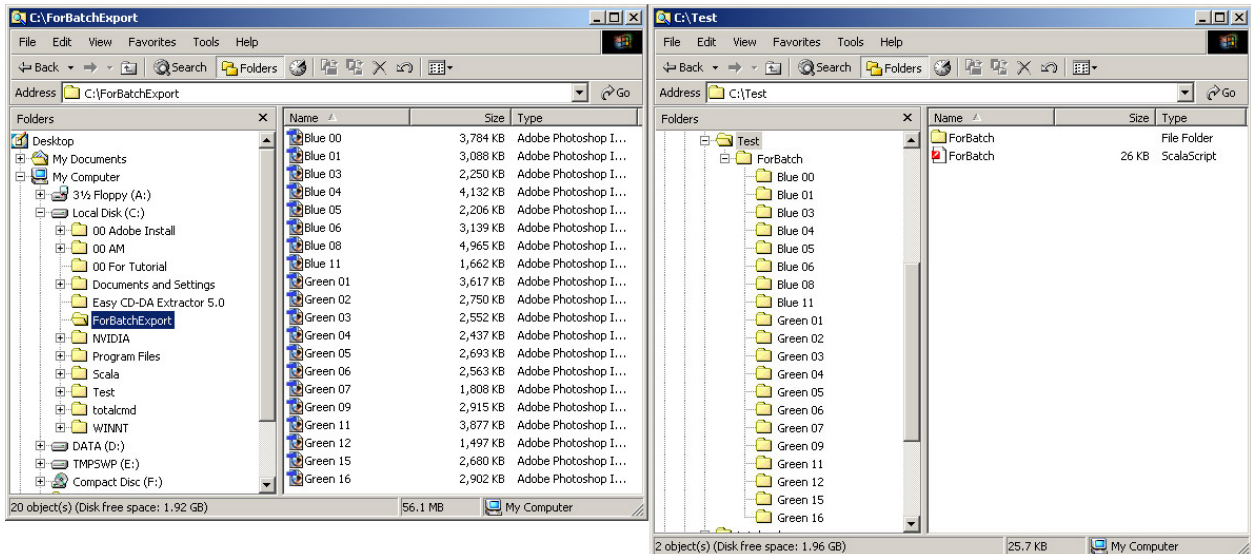
If during batch mode exporting, plug-in encounter an error while work on some particular file, it will generate text file describing that error and it will terminate work on that file. However it will not terminate batch exporting.

Error file has a name composed from two parts:

Prefix is "BatchReport" and the Photoshop file name (name of file that was the cause of error) that is concatenated to prefix along with txt extension.

Generated File Structure

In this example we have started with 20 PSD files placed in folder `c:\ForBatch Export\` and we have attached them to script `c:\test\ForBatch.SCA`. The snapshots of folder structures are shown in following picture.



To ease any additional work on created script and exported clip files plug-in organizes exported clips in subfolders under main script clip folder. In this case under folder `c:\ForBatch\` plug-in has created 20 clip subfolders named according to originating PSD files.

If you want to have your clips in one folder just open it in Scala and click on Save. Scala will move all clips in the root clip folder. After that, you can delete all folders that plug-in has created.

¹ Adobe and Photoshop are trademarks or registered trademarks of Adobe Systems Incorporated.

² Scala and InfoChannel are trademarks or registered trademarks of Sala Inc.